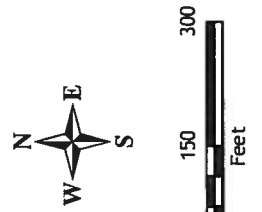


**DISCLAIMER**  
 All data and information ("Products") contained herein are for informational purposes only. Although Products are believed to be accurate, the Products are not guaranteed. Douglas County provides these Products on an "as is" basis without warranties of any kind, either express or implied, including, but not limited to, warranties of title or implied warranties of merchantability or fitness for a particular purpose. Douglas County shall not be liable for any direct, indirect, incidental, special or consequential damages arising out of the use of such Products, or the inability to use such Products or out of any breach of any warranty. The user acknowledges and agrees that the use of such Products is at the user's risk of the user.

General questions about this or any other Douglas County GIS products, including errors, omissions, corrections and/or updates should be directed to the Douglas County GIS Division at (303) 660-7416.

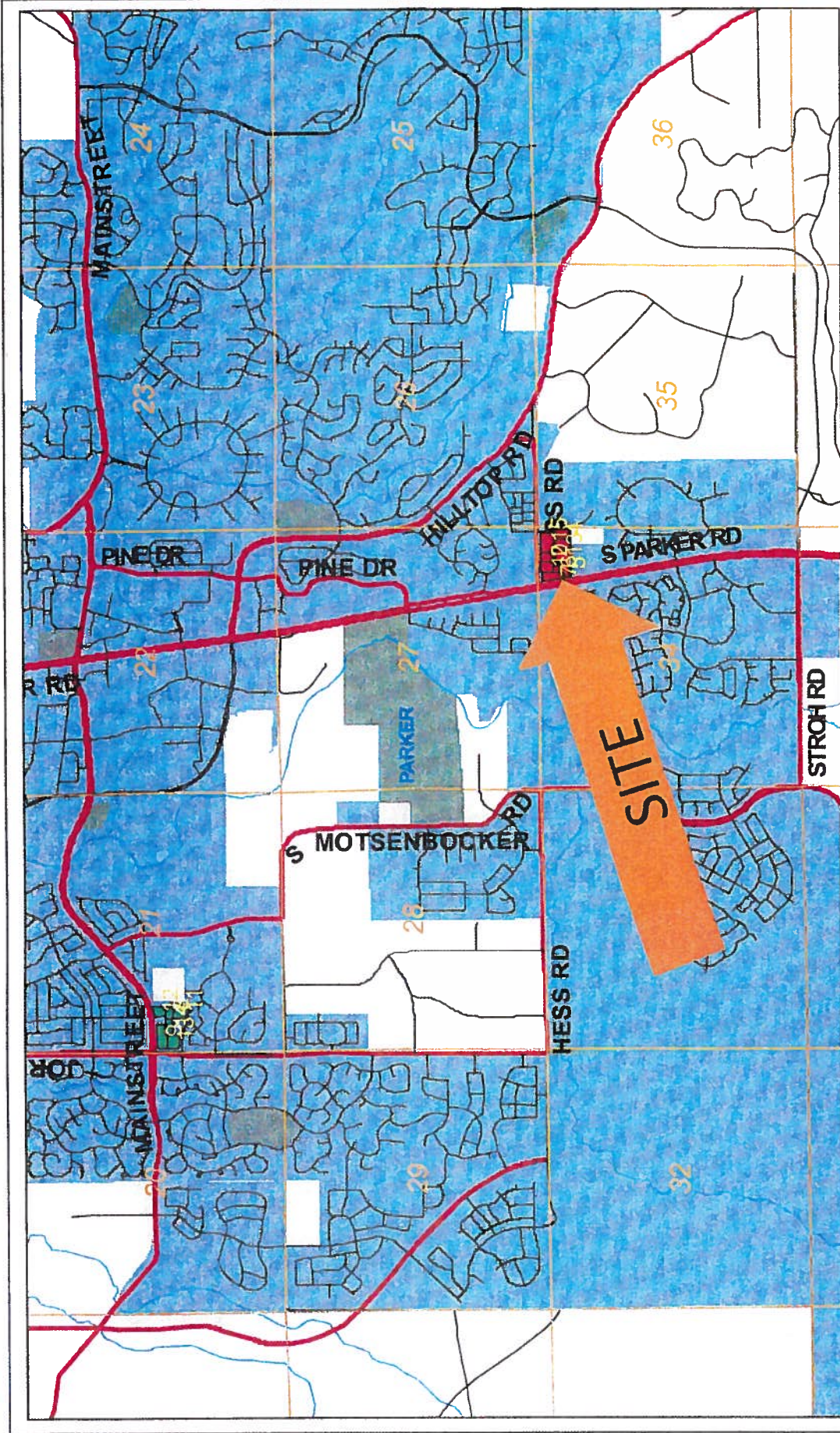
# Boundary for Robinson Ranch Metropolitan District



Received  
 SEP 17 2009  
 Dept. of Local Affairs

- Legend**
- Major Roads
  - Other Roads
  - █ Railroads
  - █ Parcels
  - █ Municipalities
  - █ Schools





DISCLAIMER  
 All data and information ("Products") contained herein are for informational purposes only and do not constitute a warranty. Douglas County does not warrant that the Products are error free. Douglas County provides these Products on an "as is" basis without warranties of any kind, either express or implied, including, but not limited to, warranties of title or implied warranties of merchantability or fitness for a particular purpose. Douglas County shall not be liable for any damages, including consequential or special damages, arising out of the use of such Products, or the inability to use such Products or out of any breach of any warranty. The user acknowledges and agrees that the use of such Products is at the sole risk of the user.

General questions about this or any other Douglas County GIS products, including errors, omissions, corrections and/or updates, should be directed to Douglas County GIS Division at (303) 680-7416.

## Vicinity Map for Robinson Ranch Metropolitan District

Received  
 SEP 17 2009  
 Dept. of Local Affairs

- Legend**
- Major Roads
  - Other Roads
  - Railroads
  - Parcels
  - Municipalities
  - Schools

**EXHIBIT A**

Legal Description

ROBINSON RANCH FILING NO. 2, FIRST AMENDMENT,  
COUNTY OF DOUGLAS,  
STATE OF COLORADO

Received  
SEP 17 2009  
Dept. of Local Affairs